

Holbrook

MAX & LOUISE



Road Trippers Quilt designed by: **Max & Louise**
Quilt Size: **82" x 90"** • Skill Level: **Intermediate**

andover • makower.uk

Free Pattern Download Available

1384 Broadway New York, NY 10018
Tel. (800) 223-5678 • andoverfabrics.com

Road Trippers



Featuring Andover Fabrics new Collection: Holbrook by Max & Louise

Quilt designed by Max & Louise

Quilt finished 82" x 90"

Cutting Directions

Note: Read assembly directions before cutting patches. Borders are cut to exact length required plus ¼" seam allowance. WOF designates the width of fabric from selvedge to selvedge (approximately 42" wide).

- Fabric A** Cut (33) Template 1 tumblers.
- Fabric B** Cut (33) Template 1 tumblers.
Blue Version Only
Cut (2) 7 ¾" x 94" Length of Fabric (LOF) strips.
Cut (2) 7 ¾" x 85" LOF strips.
- Fabric C** Cut (33) Template 1 tumblers.
- Fabric D** Cut (33) Template 1 tumblers.
- Fabric E** Cut (33) Template 1 tumblers.
- Fabric F** Cut (33) Template 1 tumblers.
- Fabric G** Cut (33) Template 1 tumblers.
- Fabric H** Cut (32) Template 1 tumblers.
- Fabric I** Cut (32) Template 1 tumblers.
- Fabric J** Cut (32) Template 1 tumblers.
Pink Version Only
Cut (9) 2 ½" WOF strips for the binding.
- Fabric K** Cut (32) Template 1 tumblers.
- Fabric L** Cut (32) Template 1 tumblers.
Green Version Only
Cut (2) 7 ¾" x 94" LOF strips.
Cut (2) 7 ¾" x 85" LOF strips.
- Fabric M** Cut (32) Template 1 tumblers.
- Fabric N** Cut (32) Template 1 tumblers.
- Fabric O** Cut (32) Template 1 tumblers.
- Fabric P** Cut (32) Template 1 tumblers.
Green Version Only
Cut (9) 2 ½" WOF strips for the binding.
- Fabric Q** Cut (32) Template 1 tumblers.
- Fabric R** Cut (32) Template 1 tumblers.

Fabric Requirements

Blue Version		Yardage	Fabric
Fabric A	blocks	¾ yard	1542-E
Fabric B	blocks, border	3 yards	1536-B
Fabric C	blocks	¾ yard	1537-G
Fabric D	blocks	¾ yard	1538-R
Fabric E	blocks	¾ yard	1539-Y
Fabric F	blocks	¾ yard	1540-P
Fabric G	blocks	¾ yard	1541-E
Fabric H	blocks	¾ yard	1542-B
Fabric I	blocks	¾ yard	1539-G
Fabric J	blocks	¾ yard	1540-R
Fabric K	blocks	¾ yard	1542-Y
Fabric L	blocks	¾ yard	1536-G
Fabric M	blocks	¾ yard	1537-B
Fabric N	blocks	¾ yard	1538-V
Fabric O	blocks	¾ yard	1539-E
Fabric P	blocks	¾ yard	1540-G
Fabric Q	blocks	¾ yard	1541-G
Fabric R	blocks	¾ yard	1542-P
Fabric S	blocks	¾ yard	1536-E
Fabric T	blocks	¾ yard	1537-Y
Fabric U	blocks	¾ yard	1538-B
Fabric V	blocks	¾ yard	1539-B
Fabric W	blocks, binding	1 yard	1540-B
Fabric X	blocks	¾ yard	1541-Y
Backing		7 ½ yards	1537-B

- Fabric S** Cut (32) Template 1 tumblers.
Pink Version Only
Cut (2) 7 ¾" x 94" LOF strips.
Cut (2) 7 ¾" x 85" LOF strips.
- Fabric T** Cut (32) Template 1 tumblers.
- Fabric U** Cut (32) Template 1 tumblers.
- Fabric V** Cut (32) Template 1 tumblers.
- Fabric W** Cut (32) Template 1 tumblers.
Blue Version Only
Cut (9) 2 ½" WOF strips for the binding.
- Fabric X** Cut (32) Template 1 tumblers.
- Backing** Cut (3) 89" x WOF strips. Sew the strips together and trim to make (1) 89" x 98" backing.

Road Trippers

Fabric Requirements

Pink Version		Yardage	Fabric
Fabric A	blocks	3/8 yard	1542-E
Fabric B	blocks	3/8 yard	1536-B
Fabric C	blocks	3/8 yard	1537-G
Fabric D	blocks	3/8 yard	1538-R
Fabric E	blocks	3/8 yard	1539-Y
Fabric F	blocks	3/8 yard	1540-P
Fabric G	blocks	3/8 yard	1541-E
Fabric H	blocks	3/8 yard	1542-B
Fabric I	blocks	3/8 yard	1539-G
Fabric J	blocks, binding	1 yard	1540-R
Fabric K	blocks	3/8 yard	1542-Y
Fabric L	blocks	3/8 yard	1536-G
Fabric M	blocks	3/8 yard	1537-B
Fabric N	blocks	3/8 yard	1538-V
Fabric O	blocks	3/8 yard	1539-E
Fabric P	blocks	3/8 yard	1540-G
Fabric Q	blocks	3/8 yard	1541-G
Fabric R	blocks	3/8 yard	1542-P
Fabric S	blocks, border	3 yards	1536-E
Fabric T	blocks	3/8 yard	1537-Y
Fabric U	blocks	3/8 yard	1538-B
Fabric V	blocks	3/8 yard	1539-B
Fabric W	blocks	3/8 yard	1540-B
Fabric X	blocks	3/8 yard	1541-Y
Backing		7 1/2 yards	1537-Y

Fabric Requirements

Green Version		Yardage	Fabric
Fabric A	blocks	3/8 yard	1542-E
Fabric B	blocks	3/8 yard	1536-B
Fabric C	blocks	3/8 yard	1537-G
Fabric D	blocks	3/8 yard	1538-R
Fabric E	blocks	3/8 yard	1539-Y
Fabric F	blocks	3/8 yard	1540-P
Fabric G	blocks	3/8 yard	1541-E
Fabric H	blocks	3/8 yard	1542-B
Fabric I	blocks	3/8 yard	1539-G
Fabric J	blocks	3/8 yard	1540-R
Fabric K	blocks	3/8 yard	1542-Y
Fabric L	blocks, border	3 yards	1536-G
Fabric M	blocks	3/8 yard	1537-B
Fabric N	blocks	3/8 yard	1538-V
Fabric O	blocks	3/8 yard	1539-E
Fabric P	blocks, binding	1 yard	1540-G
Fabric Q	blocks	3/8 yard	1541-G
Fabric R	blocks	3/8 yard	1542-P
Fabric S	blocks	3/8 yard	1536-E
Fabric T	blocks	3/8 yard	1537-Y
Fabric U	blocks	3/8 yard	1538-B
Fabric V	blocks	3/8 yard	1539-B
Fabric W	blocks	3/8 yard	1540-B
Fabric X	blocks	3/8 yard	1541-Y
Backing		7 1/2 yards	1537-G

Road Trippers

Making the Quilt

Pay attention to the unit orientations when assembling the various components.

1. Block Assembly

Sew together (31) assorted tumblers, paying attention to their orientation, to make Row One (Diagram 1). Repeat to make Row Two through Row Twenty-Five.

2. Sew together the (25) Rows, lengthwise and in numerical order from top to bottom, to make Block One (Diagram 1).

3. Trim Block One to measure 66 1/2" x 75 1/2" to make the Center Block (Diagram 2 on Page 5).

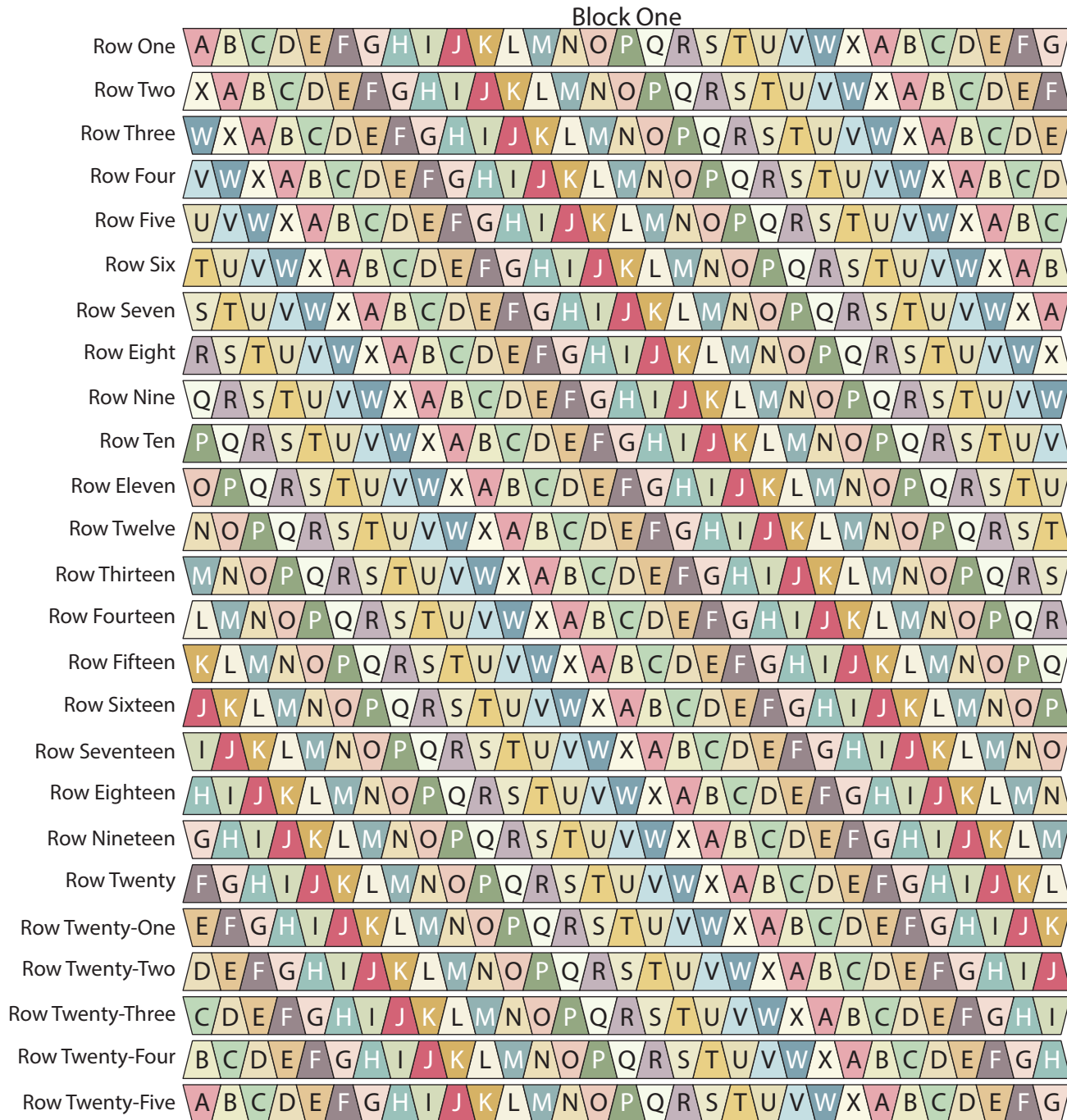


Diagram 1

Road Trippers

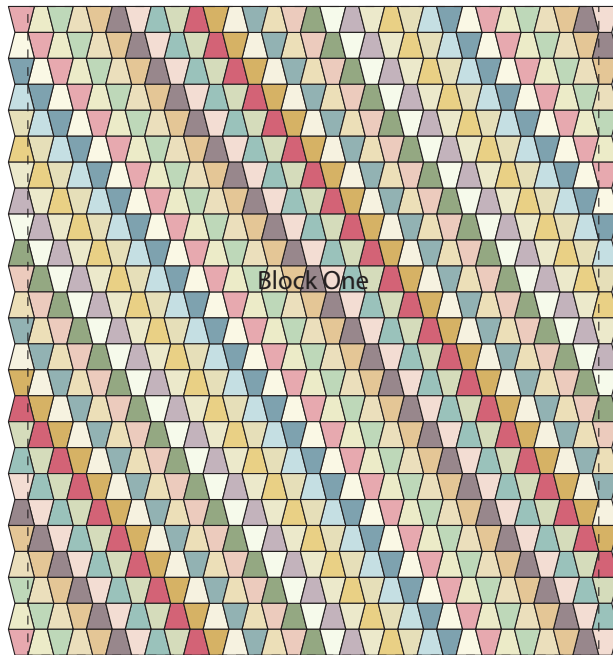
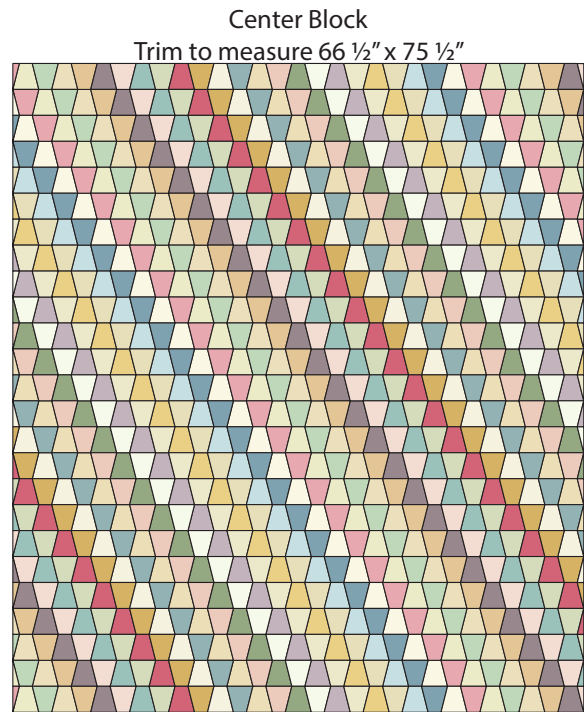


Diagram 2



Quilt Top Assembly

(Refer to the *Quilt Layout* when assembling the quilt top.)

- Center (1) Fabric B, L or S (depending on the version) $7\frac{3}{4}$ " x 94" strip on (1) side of the Center Block and pin in place. Start sewing the strip a $\frac{1}{4}$ " from the top edge of the block and stop a $\frac{1}{4}$ " from the bottom edge. **DO NOT TRIM THE EXCESS.** Repeat with the opposite side.
- Repeat Step 4 to sew (1) $7\frac{3}{4}$ " x 85" strip to the top and to the bottom of the Center Block, making sure to stop and start $\frac{1}{4}$ " away from each end of the block. To miter each corner, fold the Center Block on a diagonal, wrong side together. This should line up the strips from adjacent sides (Fig. 3).

- Starting at the sewn seam (represented by the arrow in Figure 3), draw a 45-degree line to the edge of the fabric. Sew on the drawn line. Trim the excess fabric leaving a $\frac{1}{4}$ " seam. Repeat this step with the remaining corners.

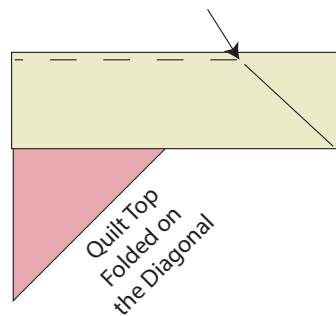
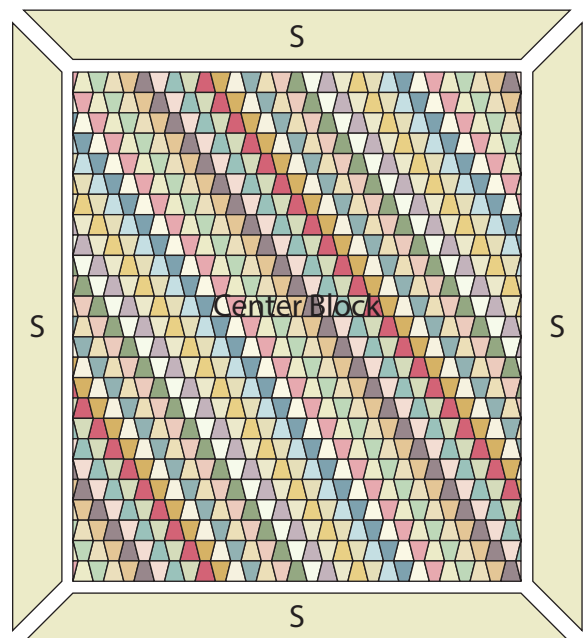


Diagram 3

Finishing the Quilt

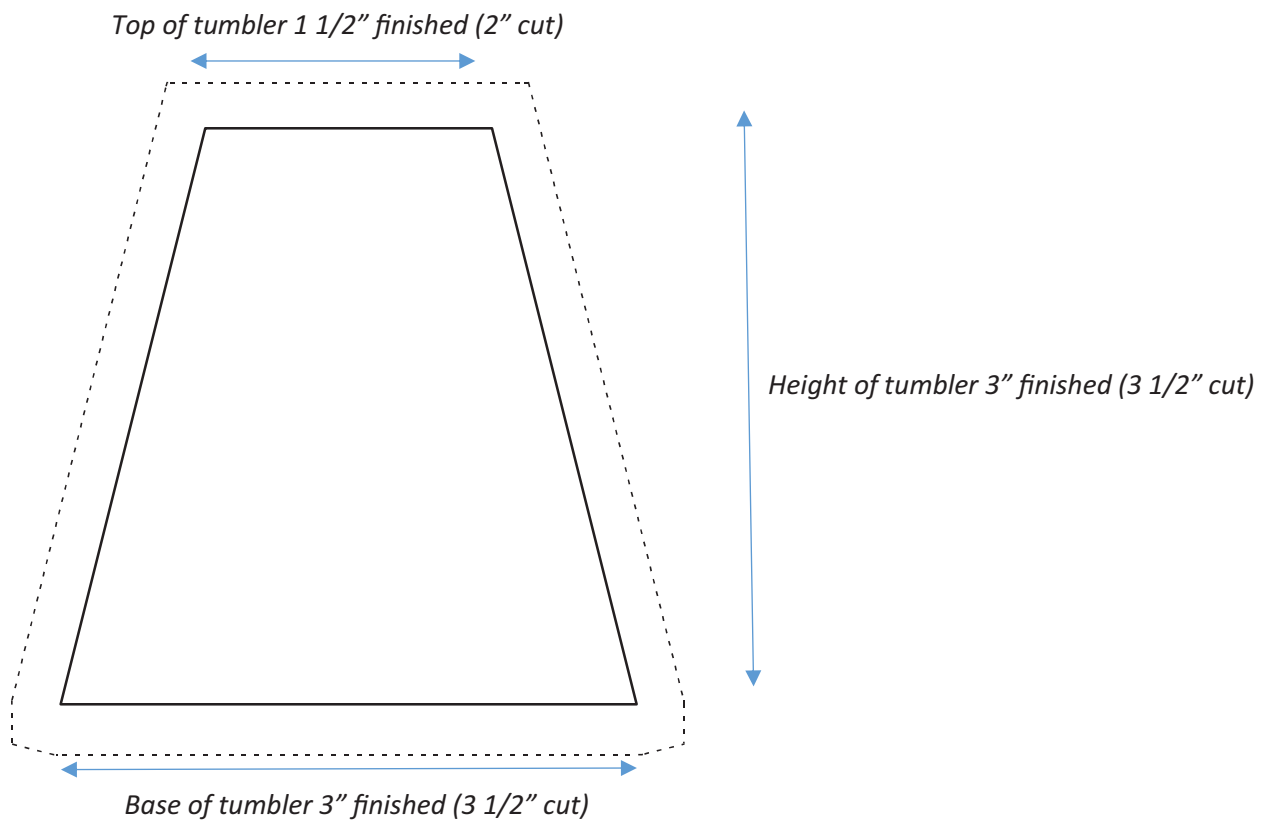
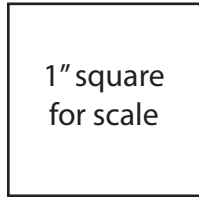
- Layer and quilt as desired.
- Sew the (9) Fabric J, P or W (depending on the version) binding strips together, end to end with a 45-degree seams, to make the binding. Fold this long strip in half lengthwise with wrong sides together and press.
- Bind as desired.



Quilt Layout

Road Trippers

100% Template



Holbrook

MAX & LOUISE



Note: Yardages below are for the Blue Version. Please see the Fabric Requirements on Page 3 for the Red and Green Versions.



1536-B

3 yds



1536-E

3/8 yd



1536-G

3/8 yd



1537-B

(includes backing)

7 7/8 yds



1537-G

3/8 yd



1537-Y

3/8 yd



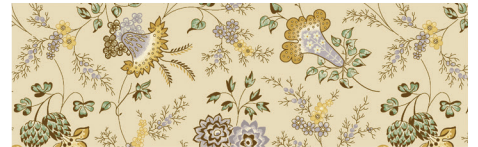
1538-B

3/8 yd



1538-R

3/8 yd



1538-V

3/8 yd



1539-B

3/8 yd



1539-E

3/8 yd



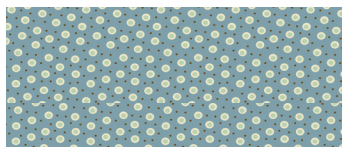
1539-G

3/8 yd



1539-Y

3/8 yd



1540-B

(includes binding)

1 yd



1540-G

3/8 yd



1540-P

3/8 yd



1540-R

3/8 yd



1541-E

3/8 yd



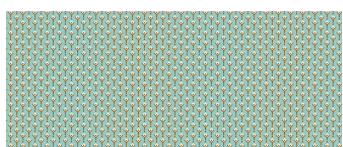
1541-G

3/8 yd



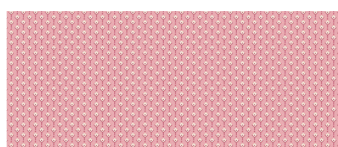
1541-Y

3/8 yd



1542-B

3/8 yd



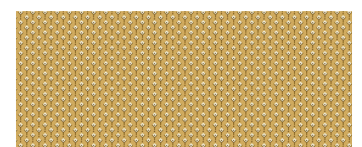
1542-E

3/8 yd



1542-P

3/8 yd



1542-Y

3/8 yd

Bolts needed to cut project kits: 15 yds = 1 bolt

Century Solids: 10 yds = 1 bolt

Fabrics shown are 25% of actual size.

andover : makower.uk

Free Pattern Download Available

1384 Broadway New York, NY 10018
Tel. (800) 223-5678 • andoverfabrics.com